

# How to Install the BDMS Web Access 7.0 SP1 Patch 1

On December 8th, 2018, the University updated BDM Web Access to the latest version (ApplicationXtender 16.3).

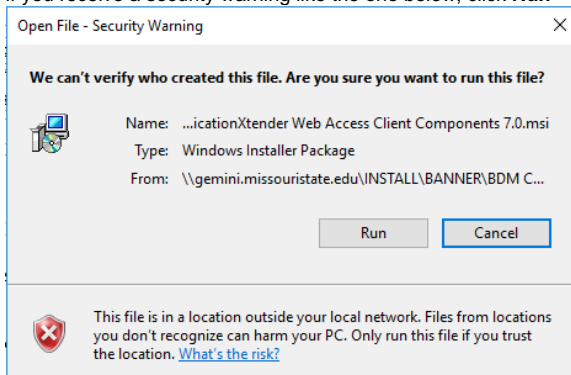
Do not install the 7.0 version of BDMS below. Contact User Support and request that the Captiva Tool kit be installed to support scanning for the new ApplicationXtender 16.3.

## Related articles:

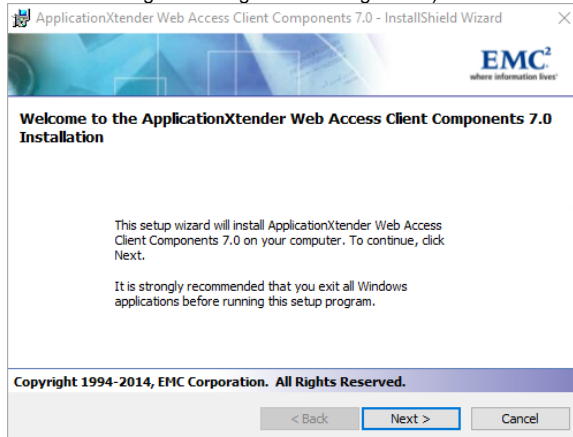
- [INB Integration](#)
- [Payroll Calendars](#)
- [EMS Terminology](#)
- [Projected Course Offerings](#)
- [My Missouri State Portal](#)

## Step-by-step guide

1. If Internet Explorer is open, close it.
2. Click the Start menu.
3. Type `lgemini.missouristate.edu\INSTALL` and hit Enter.
4. Open the **BANNER** folder.
5. Open the **BDM Components** folder
6. There, double-click the **ApplicationXtender Web Access Client Components 7.0.msi** file to run it.
7. If you receive a security warning like the one below, click **Run**

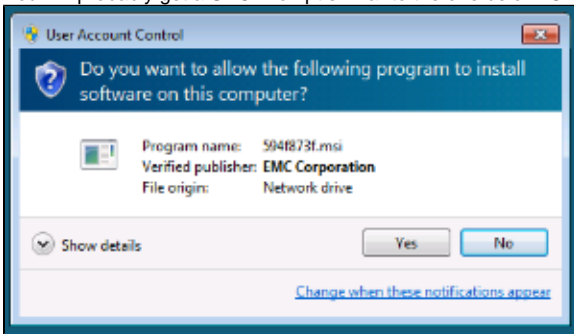


8. An installer should appear, as in the screenshot below. Click **Next**. (Note that you can click the screen shot images in this guide to enlarge them)



9. Select **I accept the terms in the license agreement** and click **Next**.
10. Enter your name for User Name and *Missouri State University* for the Organization and click **Next**.
11. Click **Next** on the following screen.
12. Leave *Complete* selected and click **Next**.
13. Click **Install**

14. You will probably get a UAC Prompt similar to the one below. Click **Yes**.



15. Wait while the components install. When they're done, click **Finish**.

---

For questions or comments, contact the Computer Services Help Desk  
[HelpDesk@MissouriState.edu](mailto:HelpDesk@MissouriState.edu)  
417-836-5891