

How to Download and Install Pearson Lockdown Browser



This page is no longer being updated. Please refer to the [Knowledge Base](#) to view the most updated information.

Related articles:

- [Discussion Board](#)
- [Discussion Board Guidelines and Sample Rubric](#)
- [Forum Settings](#)
- [How to Create a Discussion Board Forum](#)
- [How to Create a Discussion Board Post](#)

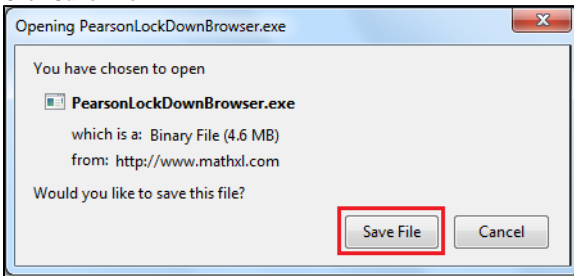
Step-by-step guide

If, when completing an assignment or taking a test using My Math Lab, you are prompted to install the Pearson Lockdown Browser:

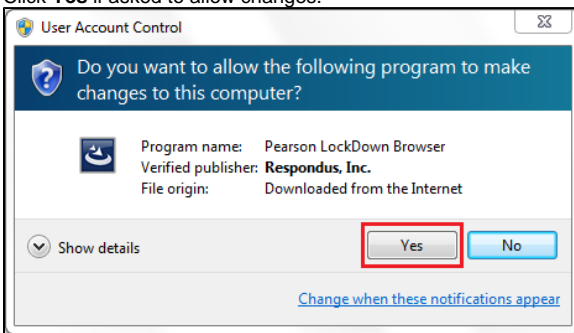
1. Go to <http://www.mathxl.com/BrowserCheck/DownloadPearsonLockDownBrowser.aspx?lang=en-US&autoh=yes¢erwin=yes>.
2. Click **Install the Pearson LockDown Browser now.**



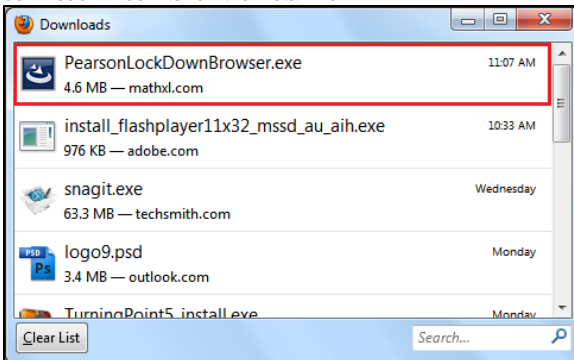
3. Click **Save File.**



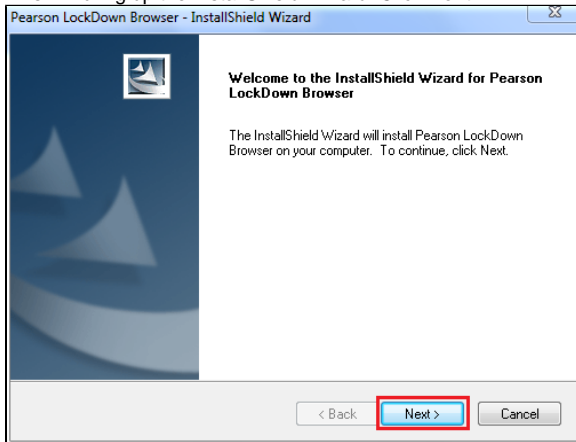
4. Click **Yes** if asked to allow changes.



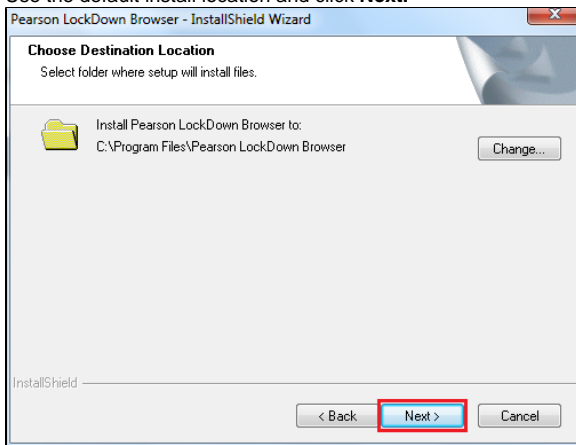
5. Once the file has been downloaded, double-click **PearsonLockDownBrowser.exe** in the download window to run the install file.



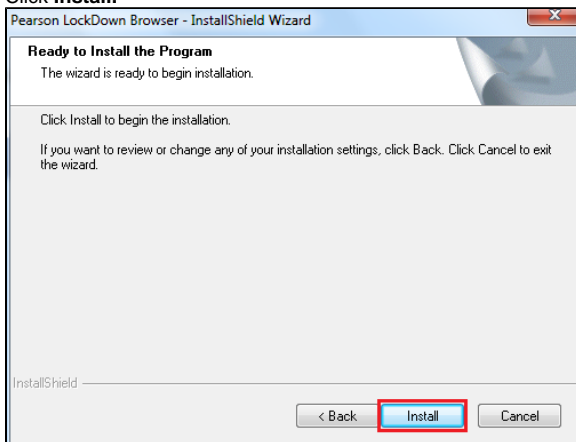
6. This will bring up the InstallShield Wizard. Click **Next**.



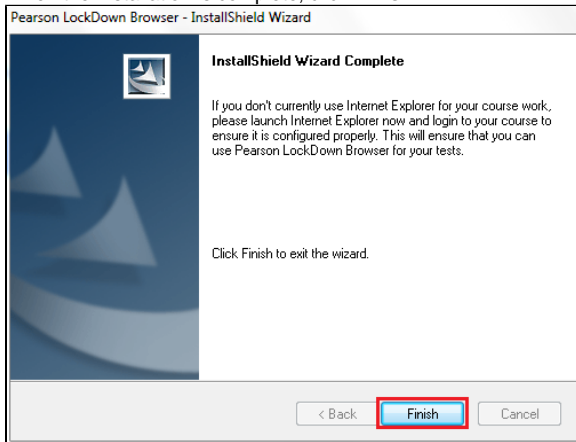
7. Use the default install location and click **Next**.



8. Click **Install**.



9. When the Installation is complete, click **Finish**.



10. Return to My Math Lab and continue with your assignment!

For questions or comments, contact the Computer Services Help Desk
HelpDesk@MissouriState.edu
417-836-5891